

HA.11 Clone 16B12 Monoclonal Antibody, Purified
Catalog Number: MMS-101P
Available Size: 0.2 mL, 0.5 mL, 1.0 mL

Description: Monoclonal Antibody, HA.11

Intended Use: **Research Use Only (RUO)**

This product is sold for laboratory research use only, not for human or in-vivo use.

Clone: 16B12

Form: Purified Antibody (Stored in PBS + 50% Glycerol + 0.03% Thimerosal)

Host: Mouse

IsoType: IgG1

[Ab]: 1 mg/mL

Specificity: Monoclonal antibody HA.11 was raised against the twelve amino acid peptide CYPDVDPDYASL. This second-generation HA antibody is an excellent substitute for the 12CA5 monoclonal antibody. The HA.11 antibody recognizes the influenza hemagglutinin epitope (YPYDVDPDYA) which has been used extensively as a general epitope tag in expression vectors. The extreme specificity of the antibody allows unambiguous identification and quantitative analysis of the tagged protein. The HA.11 antibody recognizes HA epitopes located in the middle of protein sequences as well as at the N- or C-terminus.

Uses: This antibody is effective in immunoblotting (WB), immunohistochemistry

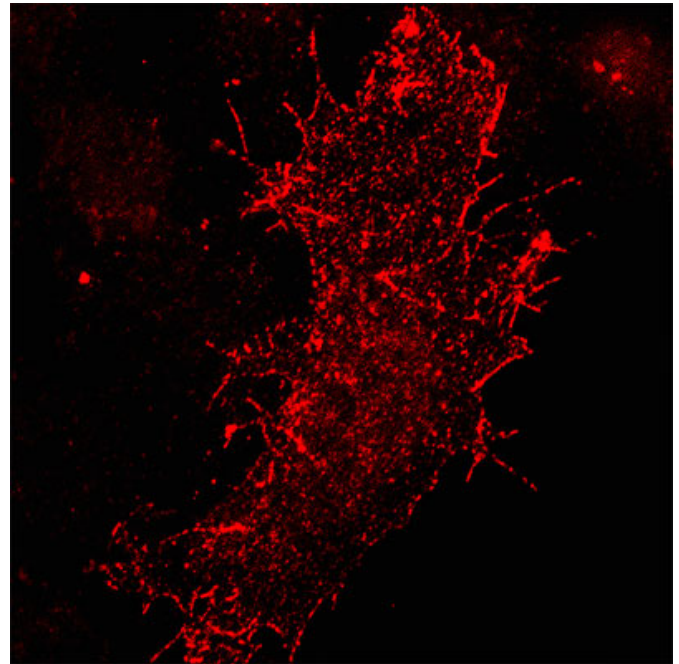


Image Description: Porcine aortic endothelial (PAE) cells expressing human dopamine transporter tagged with HA.11. Photo courtesy of A. Sorkin.

(IHC), immunofluorescence (IF), and immunoprecipitation (IP) of tagged proteins.

Suggested Working Dilution: The optimal working dilution should be determined for each specific assay condition.

- WB: 1:1,000*
- IF: 1:1,000
- IHC: 1:1,000
- IP: 1:150

Notes: *Our Posi-Tag Control Protein (PRO-133P) can be used as a helpful positive control for this antibody.

Storage: This product contains 50% glycerol and should be stored at -20°C.

References: Pecot MY, Malhotra V. Golgi membranes remain segregated from the endoplasmic reticulum during mitosis in

mammalian cells. *Cell* 116:99-107, 2004.

Kim JY, Sun Q, Oglesbee M, Yoon SO. The role of ErbB2 signaling in the onset of terminal differentiation of oligodendrocytes in vivo. *J Neurosci* 23(13):5561-5571, 2003. **[IHC, IP, WB]**

Helliwell SB, Losko S, Kaiser CA. Components of a ubiquitin ligase complex specify polyubiquitination and intracellular trafficking of the general amino acid permease. *J Cell Biol* 153(4):649-662, 2001. **[WB]**

Bennett BD, Denis P, Haniu M, Teplow DB, Kahn S, Louis JC, Citron M, Vassar R. A furin-like convertase mediates propeptide cleavage of BACE, the Alzheimer's beta -secretase. *J Biol Chem* 275(48):37712-37717, 2000. **[IF, IP, WB]**

Kolodziej P, Young R. Epitope tagging and protein surveillance. *Meth Enzymol* 194:508-519, 1991. **[General]**

Field J, Nikawa J, Broek D, MacDonald B, Rodgers K, Wilson I, Lerner R, Wigler M. Purification of RAS responsive adenylyl cyclase complex from *Saccharomyces cerevisiae* by use of an epitope addition method. *Mol Cell Biol* 8:2159-2165, 1988. **[General]**

Warranty/Conditions: Covance products may not be resold or modified for resale without prior written approval.

Related Products:

- HA.11 Peptide, Purified
Catalog Number PEP-101P
- 9E10 Monoclonal Antibody (anti-c-myc),
Purified
Catalog Number MMS-150P

- 6-His Monoclonal Antibody, Purified
Catalog Number MMS-156P
- Posi-Tag Epitope Tag Control Protein
Catalog Number PRO-133P
- HA.11 Clone 16B12 Monoclonal Antibody,
Affinity Matrix
Catalog Number AFC-101P
- HA.11 Polyclonal Antibody, Purified
Catalog Number PRB-101P

Product Revision Date: 8/17/2009