

Z-FISH™ ANTIBODIES

ZEBRAFISH SPECIFIC ANTIBODIES AND LYSATES

Rabbit Polyclonal antibodies

- Including **Phospho specific**
- **Affinity** purified
- **Quality** tested
- **Zebrafish specific**
- **Convenient** package (150µl)
- **Wide range** of application fields (see reverse)

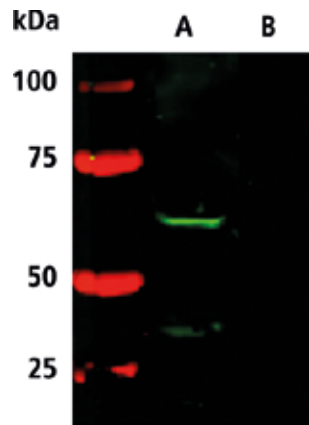


Figure 1. **Western blot** of zebrafish lysate (5 dpf) with Z-Fish™ anti-p53 (CT) (cat#AS-55342). An immunoreactive band at ~53 kDa was detected (A); this band was blocked by the immunizing peptide (B). HiLyte Fluor™ 750 labeled goat antirabbit secondary antibody (cat#AS-28176-HF750) was used (Li-Cor Odyssey).



Figure 2. **Western blot** of ZF4 cell lysate (A) with Z-Fish™ anti-ROCK-1 (CT) (cat#AS-55430). An immunoreactive band at 155 kDa was detected. This band was blocked by the immunizing peptide (B).

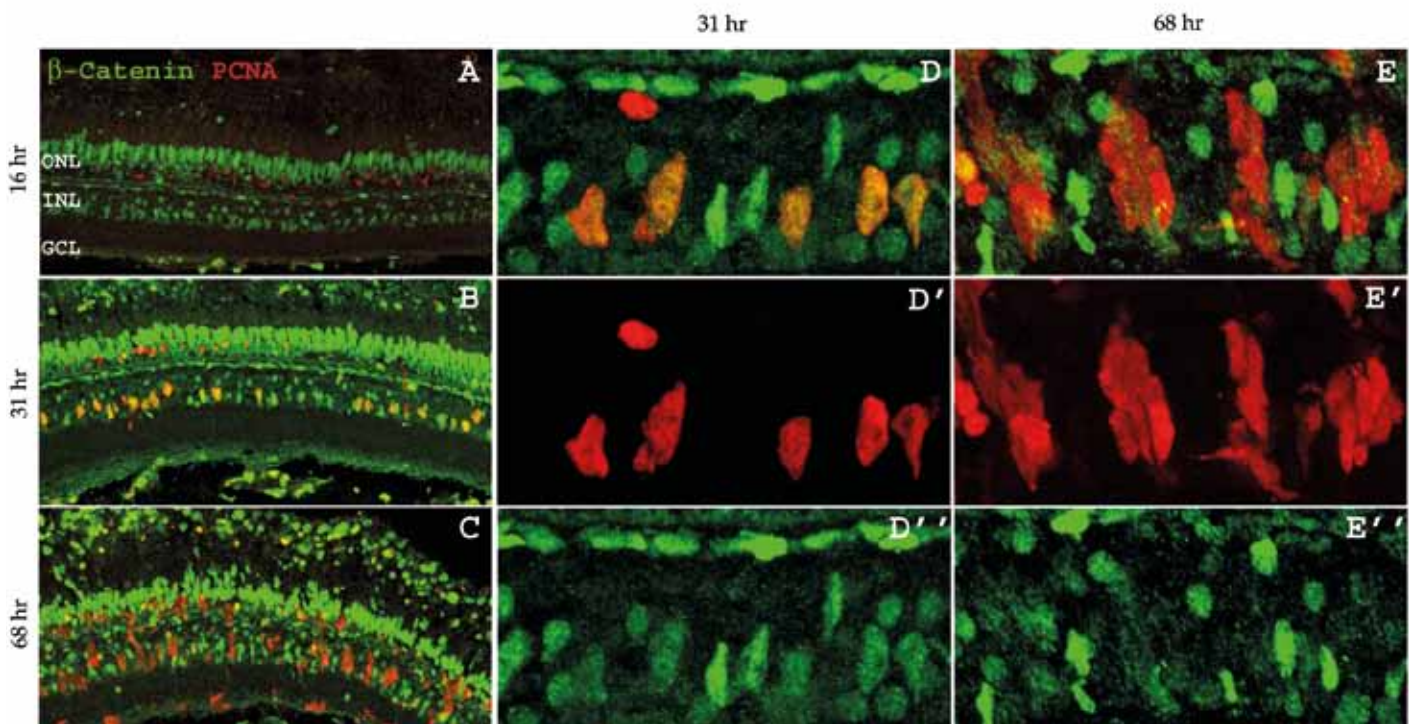


Figure 3. **Immunohistochemical staining** of adult albino zebrafish retinas following 16 hr (A), 31 hr (B & D) and 68 hr (C & E) of light exposure. Tissue sections are labeled with rabbit polyclonal anti-beta catenin (cat#AS-55364) (green) and mouse monoclonal anti-PCNA (red). (A-C) Beta-catenin staining is observed at all time points in the nuclei of cells in the outer nuclear layer (ONL) and inner nuclear layer (INL), but not in the ganglion cell layer (GCL). (D-E) Increased magnification of 31 hr (D-D'') and 68 hr (E-E'') time points. Image courtesy of Ryne Gorsuch and Dr. David Hyde (University of Notre Dame).

