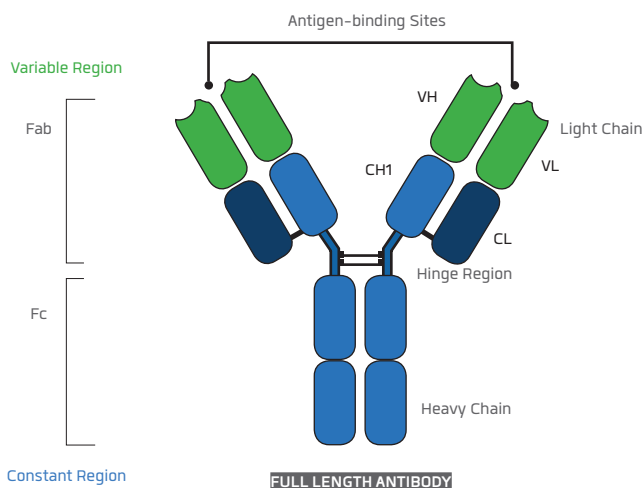


# Protein G Affinity Chromatography Resin

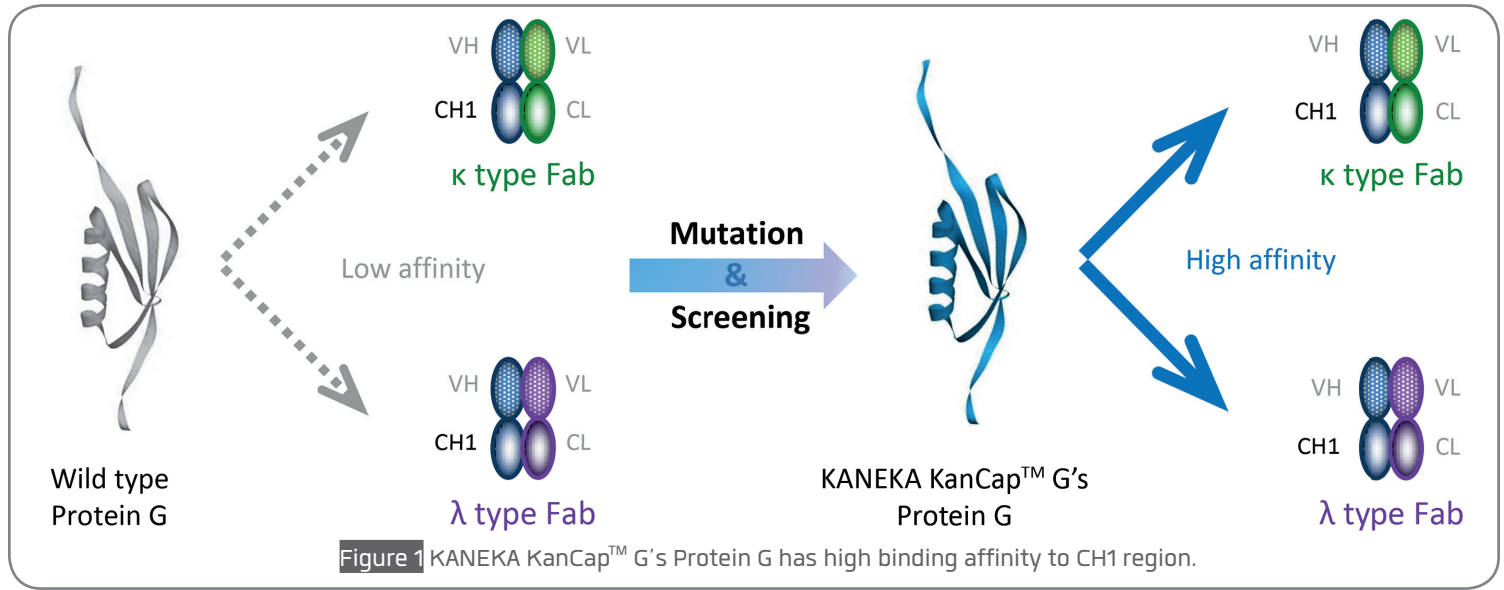
## KANEKA KanCap™ G

- > High binding capacity for antibody molecules containing CH1 or Fc region
- > High purification

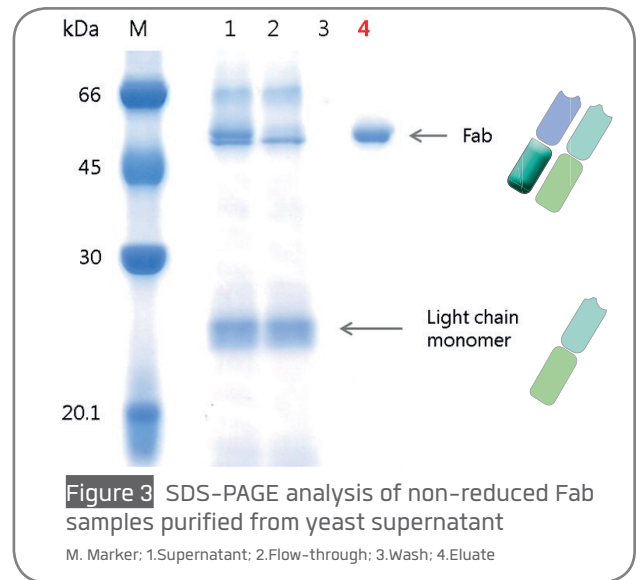
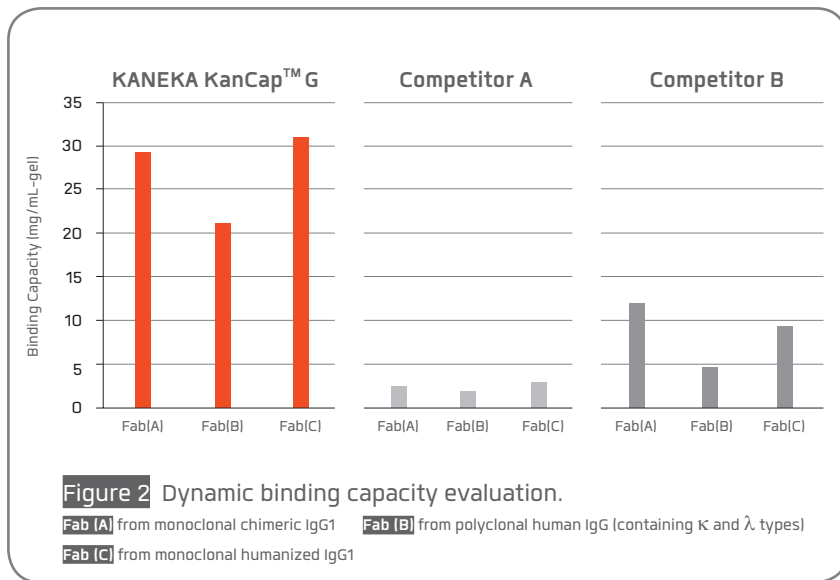


KANEKA KanCap™ G is a newly developed cellulose-based affinity resin designed for efficient capture and purification of antibody fragment formats containing the CH1 region such as Fab and F(ab')<sub>2</sub>. It consists of a highly cross linked cellulose matrix and a newly developed Protein G ligand that exhibits an increased binding affinity for the CH1 region of an antibody. It is also an alternative tool to purify full length antibody formats.

Kaneka has developed a Protein G mutant that exhibits substantially improved binding affinities to antibody fragment (Fab) containing the CH1 region of an antibody. It has high binding affinity to both Fabs of κ type and λ type.



Excellent purification tool for antibody fragments



Contact information

**Japan**  
 Kaneka Corporation  
 1-12-32, Akasaka, Minato-ku,  
 Tokyo 107-6028, Japan  
 bioproducts@kaneka.co.jp

**USA**  
 Kaneka US Innovation Center  
 7979 Gateway Blvd., Suite 220  
 Newark, CA 94560  
 bioproducts@kaneka.com

**Europe**  
 Kaneka Eurogentec S.A.  
 Rue du bois Saint-Jean, 14  
 4102 Seraing, Belgium  
 bioseparation@eurogentec.com

