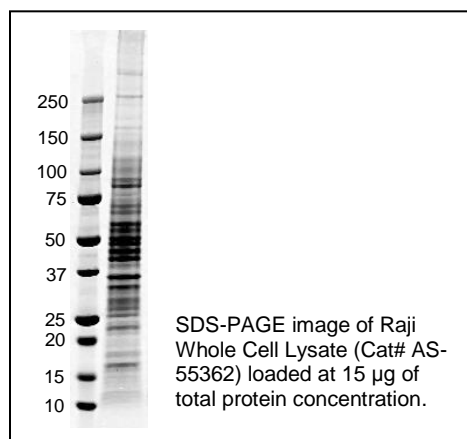


Update: September, 2017

## Product Data Sheet

---

Product Name:	Raji Whole Cell Lysate
Catalog Number:	AS-55362
Lot Number:	See label on vial
Formulation:	Lysate is in SDS-PAGE sample buffer (pH 6.8), heated for 5 minutes at 95-100 °C. The buffer is containing 62.5 mM Tris-HCl, 2% SDS, 10% glycerol, 0.002% bromophenol blue and reducing agent.
Size:	200 µg
Concentration:	2 mg/mL
Application Notes:	Raji Whole Cell Lysate is suitable for SDS-PAGE and/or Western blot. 10-30 µg of the total protein per lane is recommended.



Storage: Store at -80°C. Avoid repeating freeze-thaw cycles.

This product is for *in vitro* research use only.