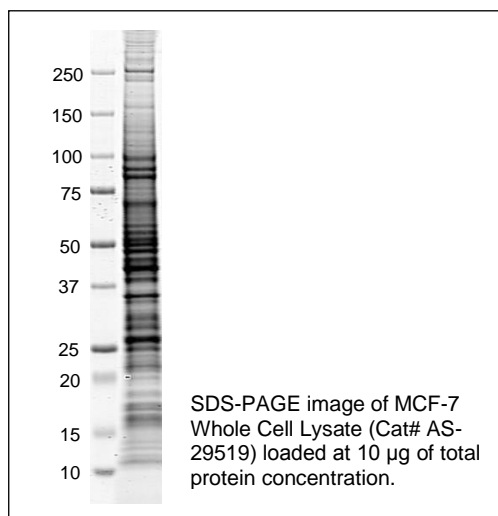


Update: September, 2017

Product Data Sheet

| | |
|--------------------|---|
| Product Name: | MCF-7 Whole Cell Lysate |
| Catalog Number: | AS-29519 |
| Lot Number: | See label on vial |
| Formulation: | Lysate is in SDS-PAGE sample buffer (pH 6.8), heated for 5 minutes at 95-100 °C. The buffer is containing 62.5 mM Tris-HCl, 2% SDS, 10% glycerol, 0.002% bromophenol blue and reducing agent. |
| Size: | 200 µg |
| Concentration: | 2 mg/mL |
| Application Notes: | MCF-7 Whole Cell Lysate is suitable for SDS-PAGE and/or Western blot. 10-30 µg of the total protein per lane is recommended. |



Storage: Store at -80°C. Avoid repeating freeze-thaw cycles.

This product is for *in vitro* research use only.